

# SFP Guide

## SFP Module Selection Guide

### Gigabit SFPs



#### **C000065L008A**

Single Mode Optical 1000BaseLX SFP Interface per ODU

Speed: 1 G

Mode: Single

Wavelength: 1310nm

Kit Contents: SFP Module, Cable Gland (P16 Long), Licence Key document

Spare Glands: N000000L140A

Product Support: PTP 650/670, PTP 700 4400-5725 MHz

Operating Temperature: (-40°C to +85°C)



#### **C050055L003A**

PTP 550 SFP Single Mode Optical 1000BaseLX SFP Interface per ODU

Speed: 1 G

Mode: Single

Wavelength: 1310nm

Kit Contents: SFP Module, Cable Gland (P16 Long)

Spare Glands: N000000L140A

Product Support: PTP 550/550E

Operating Temperature: (-40°C to +85°C)



#### **N000082L059A**

PTP 820 SFP Optical 1000Base-LX,EXT TEMP, 1310 nm, Single Mode

Speed: 1 G

Mode: Single

Wavelength: 1310nm

Kit Contents: SFP Module

Spare Glands: N000082L014A

Product Support: PTP 820/850

Operating Temperature: (-40°C to +85°C)



#### **N000082L213A**

PTP 820 SFP, single fiber,1490nm Tx/1310nm Rx, SM, EXT TEMP

Speed: 1 G

Mode: Single

Wavelength: 1490nm TX & 1310 RX

Kit Contents: SFP Module

Spare Glands: N000082L014A

Product Support: PTP 820/850

Operating Temperature: (-10°C to +70°C)

## SFP Module Selection Guide

### Gigabit SFPs



#### **N000082L214A**

PTP 820 SFP, single fiber, 1310nm Tx/1490nm Rx, SM, EXT TEMP

Speed: 1 G

Mode: Single

Wavelength: 1310nm TX & 1490 RX

Kit Contents: SFP Module

Spare Glands: N000082L014A

Product Support: PTP 820/850

Operating Temperature: (-10°C to +70°C)



#### **N800082L010A**

PTP 820 CSFP, 1310nm Tx/1490nm Rx, SM, EXT TEMP

Speed: 1 G

Mode: Single

Wavelength: 1310nm TX & 1490 RX

Kit Contents: SFP Module

Spare Glands: N000082L014A

Product Support: PTP 820/850

Operating Temperature: (-40°C to +85°C)



#### **N800082L011A**

PTP 820 CSFP, 1490nm Tx/1310nm Rx, SM, EXT TEMP

Speed: 1 G

Mode: Single

Wavelength: 1490nm TX & 1310 RX

Kit Contents: SFP Module

Spare Glands: N000082L014A

Product Support: PTP 820/850

Operating Temperature: (-40°C to +85°C)



#### **SFP-1G-LX**

1G SFP SMF LX Transceiver, 1310nm. -40C to 85C

Speed: 1 G

Mode: Single

Wavelength: 1310nm

Kit Contents: SFP Module

Spare Glands: C000000L124A-cnWave, N000000L140A-PMP 450m

Product Support: 60GHz cnWave (V3000, V5000) cnMatrix, PMP 450m, cnRanger

Operating Temperature: (-40°C to +85°C)

## SFP Module Selection Guide

### Gigabit SFPs



#### **C000065L009A**

Multi-mode Optical 1000BaseSX SFP Interface per ODU

Speed: 1 G

Mode: Multi

Wavelength: 850nm

Kit Contents: SFP Module, Cable Gland (P16 Long), Licence Key document

Spare Glands: N000000L140A

Product Support: PTP 650/670, PTP 700 4400-5725 MHz

Operating Temperature: (-40°C to +85°C )



#### **C050055L002A**

PTP 550 SFP Multi-mode Optical 1000BaseSX SFP Interface per ODU

Speed: 1 G

Mode: Multi

Wavelength: 850nm

Kit Contents: SFP Module, Cable Gland (P16 Long)

Spare Glands: N000000L140A

Product Support: PTP 550/550E

Operating Temperature: (0°C to +70°C )



#### **N000082L072A**

PTP 820 SFP Optical 1000Base-SX,EXT TEMP, 850 nm, Multi Mode

Speed: 1 G

Mode: Multi

Wavelength: 850nm

Kit Contents: SFP Module

Spare Glands: N000082L014A

Product Support: PTP 820/850

Operating Temperature: (-40°C to +85°C )



#### **SFP-1G-SX**

1G SFP MMF SX Transceiver, 850nm. -40C to 85C

Speed: 1 G

Mode: Multi

Wavelength: 850nm

Kit Contents: SFP Module

Spare Glands: C000000L124A-cnWave,N000000L140A-PMP 450m

Product Support: 60GHz cnWave (V3000, V5000), cnMatrix, PMP 450m, cnRanger

Operating Temperature: (-40°C to +85°C )

## SFP Module Selection Guide

### Gigabit SFPs



#### **C000065L010A**

Gigabit Ethernet 1000BaseT SFP Interface per ODU

Speed: 1 G

Mode: Gigabit-Ethernet

Wavelength: NA

Kit Contents: SFP Module, Cable Gland (P16 Long),Licence Key document

Spare Glands: N000000L140A

Product Support: PTP 650/670, PTP 700 4400-5725 MHz

Operating Temperature: (-40°C to +85°C )



#### **C050055L001A**

PTP 550 SFP Interface for Gigabit Ethernet 1000BaseT per ODU

Speed: 1 G

Mode: Gigabit-Ethernet

Wavelength: NA

Kit Contents: SFP Module, Cable Gland (P16 Long)

Spare Glands: N000000L140A

Product Support: PTP 550/550E

Operating Temperature: (-40°C to +85°C )



#### **N000082L117A**

PTP 820 SFP Electric Int 1000Base-T,EXT TEMP

Speed: 1 G

Mode: Gigabit-Ethernet

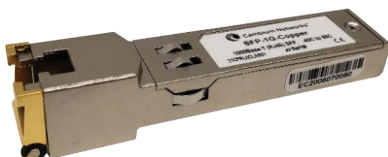
Wavelength: NA

Kit Contents: SFP Module

Spare Glands: N000082L014A

Product Support: PTP 820/850

Operating Temperature: (-40°C to +85°C )



#### **SFP-1G-COPPER**

1000Base-T (RJ45) SFP Transceiver. -40C to 85C

Speed: 1 G

Mode: Gigabit-Ethernet

Wavelength: NA

Kit Contents: SFP Module

Spare Glands: C000000L124A-cnWave,N000000L140A-PMP 450m

Product Support: 60GHz cnWave (V3000, V5000), cnMatrix, PMP 450m, cnRanger

Operating Temperature: (-40°C to +85°C )

## SFP Module Selection Guide

### Multi-Gigabit SFPs



#### **N800082L013A**

PTP 820/850 SFP+, 1310nm,SM, 10Gbit, Industrial Grade

Speed: 10 G

Mode: Single

Wavelength: 1310nm

Kit Contents: SFP Module

Spare Glands: N000082L014A

Product Support: PTP 820 / PTP 850

Operating Temperature: (-40°C to +85°C )



#### **SFP-10G-LR**

10G SFP+ SMF LR Transceiver, 1310nm. -40C to 85C

Speed: 10 G

Mode: Single

Wavelength: 1310nm

Kit Contents: SFP Module

Spare Glands: C000000L124A-CnWave

Product Support: 60GHz cnWave (V3000, V5000), cnMatrix, cnRanger

Operating Temperature: (-40°C to +85°C )



#### **N800082L012A**

PTP 820 SFP+, 850nm,MM, 10Gbit, Industrial Grade

Speed: 10 G

Mode: Multi

Wavelength: 850nm

Kit Contents: SFP Module

Spare Glands: N000082L014A

Product Support: PTP 820/850

Operating Temperature: (-40°C to +85°C )



#### **SFP-10G-SR**

10G SFP+ MMF SR Transceiver, 850nm. -40C to 85C

Speed: 10 G

Mode: Multi

Wavelength: 850nm

Kit Contents: SFP Module

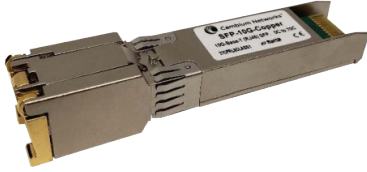
Spare Glands: C000000L124A-CnWave

Product Support: 60GHz cnWave (V3000, V5000), cnMatrix, cnRanger

Operating Temperature: (-40°C to +85°C )

## SFP Module Selection Guide

### Multi-Gigabit SFPs



#### **SFP-10G-COPPER**

10G Base-T (RJ45) SFP Transceiver. 0C to 70C

Speed: 10 G

Mode: Gigabit-Ethernet

Wavelength: NA

Kit Contents: SFP Module

Spare Glands: C000000L124A-CnWave

Product Support: 60GHz cnWave (V3000, V5000), cnMatrix, cnRanger

Operating Temperature: (0°C to +70°C )

---



#### **N000082L203A**

PTP 850 QSFP Transceiver

Speed: 40 G

Mode: Multi

Wavelength: 850nm

Kit Contents: SFP Module

Spare Glands: N000082L014A

Product Support: PTP 850

Operating Temperature: (-40°C to +85°C )

---

## SFP Module Selection Guide

### SFP Product Compatibility Table

| Product                     | 1G 850nm     | 1G 1310nm    | 1G Copper     | 1G SFP<br>1490nmTx/<br>1310nm Rx | 1G SFP<br>1310nmTx/<br>1490nm Rx | 1G CSFP<br>1490nmTx/<br>1310nm Rx | 1G SFP<br>C1310nmTx/<br>1490nm Rx | 10G 850nm    | 10G 1310nm   | 10G Copper     | 40G          |
|-----------------------------|--------------|--------------|---------------|----------------------------------|----------------------------------|-----------------------------------|-----------------------------------|--------------|--------------|----------------|--------------|
| PTP 550                     | C050055L002A | C050055L003A | C050055L001A  | N/A                              | N/A                              | N/A                               | N/A                               | N/A          | N/A          | N/A            | N/A          |
| PTP 550E                    | C050055L002A | C050055L003A | C050055L001A  | N/A                              | N/A                              | N/A                               | N/A                               | N/A          | N/A          | N/A            | N/A          |
| PTP 670                     | C000065L009A | C000065L008A | C000065L010A  | N/A                              | N/A                              | N/A                               | N/A                               | N/A          | N/A          | N/A            | N/A          |
| PTP 700<br>400-5725 MHz     | C000065L009A | C000065L008A | C000065L010A  | N/A                              | N/A                              | N/A                               | N/A                               | N/A          | N/A          | N/A            | N/A          |
| PTP 700<br>7125-8500 MHz    | N000070L016A | N000070L015A | N000070L017A  | N/A                              | N/A                              | N/A                               | N/A                               | N/A          | N/A          | N/A            | N/A          |
| PTP 820E                    | N000082L072A | N000082L059A | N000082L117A  | N000082L213A                     | N000082L214A                     | N800082L011A                      | N800082L010A                      | N800082L012A | N800082L013A | N/A            | N/A          |
| PTP 820F                    | N000082L072A | N000082L059A | N000082L117A  | N/A                              | N/A                              | N/A                               | N/A                               | N/A          | N/A          | N/A            | N/A          |
| PTP 820G                    | N000082L072A | N000082L059A | N000082L117A  | N/A                              | N/A                              | N/A                               | N/A                               | N/A          | N/A          | N/A            | N/A          |
| PTP 820S                    | N000082L072A | N000082L059A | N000082L117A  | N/A                              | N/A                              | N/A                               | N/A                               | N/A          | N/A          | N/A            | N/A          |
| PTP 820C HP                 | N000082L072A | N000082L059A | N000082L117A  | N/A                              | N/A                              | N/A                               | N/A                               | N/A          | N/A          | N/A            | N/A          |
| PTP 820C                    | N000082L072A | N000082L059A | N000082L117A  | N/A                              | N/A                              | N/A                               | N/A                               | N/A          | N/A          | N/A            | N/A          |
| PTP 850E                    | N000082L072A | N000082L059A | N000082L117A  | N000082L213A                     | N000082L214A                     | N800082L011A                      | N800082L010A                      | N800082L012A | N800082L013A | N/A            | N000082L203A |
| PTP 850C                    | N000082L072A | N000082L059A | N000082L117A  | N000082L213A                     | N000082L214A                     | N800082L011A                      | N800082L010A                      | N800082L012A | N800082L013A | N/A            | N/A          |
| PTP 850S                    | N000082L072A | N000082L059A | N000082L117A  | N000082L213A                     | N000082L214A                     | N800082L011A                      | N800082L010A                      | N800082L012A | N800082L013A | N/A            | N000082L203A |
| V3000                       | SFP-1G-SX    | SFP-1G-LX    | SFP-1G-Copper | N/A                              | N/A                              | N/A                               | N/A                               | SFP-10G-SR   | SFP-10G-LR   | SFP-10G-Copper | N/A          |
| V5000                       | SFP-1G-SX    | SFP-1G-LX    | SFP-1G-Copper | N/A                              | N/A                              | N/A                               | N/A                               | SFP-10G-SR   | SFP-10G-LR   | SFP-10G-Copper | N/A          |
| PMP 450m                    | SFP-1G-SX    | SFP-1G-LX    | SFP-1G-Copper | N/A                              | N/A                              | N/A                               | N/A                               | N/A          | N/A          | N/A            | N/A          |
| EX1010                      | SFP-1G-SX    | SFP-1G-LX    | SFP-1G-Copper | N/A                              | N/A                              | N/A                               | N/A                               | N/A          | N/A          | N/A            | N/A          |
| EX1010-P                    | SFP-1G-SX    | SFP-1G-LX    | SFP-1G-Copper | N/A                              | N/A                              | N/A                               | N/A                               | N/A          | N/A          | N/A            | N/A          |
| EX1028                      | SFP-1G-SX    | SFP-1G-LX    | SFP-1G-Copper | N/A                              | N/A                              | N/A                               | N/A                               | N/A          | N/A          | N/A            | N/A          |
| EX1028-P                    | SFP-1G-SX    | SFP-1G-LX    | SFP-1G-Copper | N/A                              | N/A                              | N/A                               | N/A                               | N/A          | N/A          | N/A            | N/A          |
| EX2010                      | SFP-1G-SX    | SFP-1G-LX    | SFP-1G-Copper | N/A                              | N/A                              | N/A                               | N/A                               | N/A          | N/A          | N/A            | N/A          |
| EX2010-P                    | SFP-1G-SX    | SFP-1G-LX    | SFP-1G-Copper | N/A                              | N/A                              | N/A                               | N/A                               | N/A          | N/A          | N/A            | N/A          |
| EX2028                      | SFP-1G-SX    | SFP-1G-LX    | SFP-1G-Copper | N/A                              | N/A                              | N/A                               | N/A                               | SFP-10G-SR   | SFP-10G-LR   | SFP-10G-Copper | N/A          |
| EX2028-P                    | SFP-1G-SX    | SFP-1G-LX    | SFP-1G-Copper | N/A                              | N/A                              | N/A                               | N/A                               | SFP-10G-SR   | SFP-10G-LR   | SFP-10G-Copper | N/A          |
| EX2016M-P                   | SFP-1G-SX    | SFP-1G-LX    | SFP-1G-Copper | N/A                              | N/A                              | N/A                               | N/A                               | SFP-10G-SR   | SFP-10G-LR   | SFP-10G-Copper | N/A          |
| EX2052                      | SFP-1G-SX    | SFP-1G-LX    | SFP-1G-Copper | N/A                              | N/A                              | N/A                               | N/A                               | SFP-10G-SR   | SFP-10G-LR   | SFP-10G-Copper | N/A          |
| EX2052-P                    | SFP-1G-SX    | SFP-1G-LX    | SFP-1G-Copper | N/A                              | N/A                              | N/A                               | N/A                               | SFP-10G-SR   | SFP-10G-LR   | SFP-10G-Copper | N/A          |
| EX2052R-P                   | SFP-1G-SX    | SFP-1G-LX    | SFP-1G-Copper | N/A                              | N/A                              | N/A                               | N/A                               | SFP-10G-SR   | SFP-10G-LR   | SFP-10G-Copper | N/A          |
| cnRanger RRH<br>2 and 3 GHz | SFP-1G-SX    | N/A          | N/A           | N/A                              | N/A                              | N/A                               | N/A                               | N/A          | N/A          | N/A            | N/A          |
| cnRanger Sierra<br>800 BBU  | SFP-1G-SX    | N/A          | N/A           | N/A                              | N/A                              | N/A                               | N/A                               | SFP-10G-SR   | SFP-10G-LR   | SFP-10G-Copper | N/A          |

### ABOUT CAMBIUM NETWORKS

Cambium Networks empowers millions of people with wireless connectivity worldwide. Its wireless portfolio is used by commercial and government network operators as well as broadband service providers to connect people, places and things. With a single network architecture spanning fixed wireless and Wi-Fi, Cambium Networks enables operators to achieve maximum performance with minimal spectrum. End-to-end cloud management transforms networks into dynamic environments that evolve to meet changing needs with minimal physical human intervention. Cambium Networks empowers a growing ecosystem of partners who design and deliver gigabit wireless solutions that just work.