

60 GHz cnWave V5000

Distribution Node

QUICK LOOK:

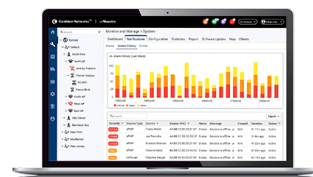
- Supports 57 to 66 GHz
- Dual-sector with 280° coverage
- Up to 15.2 Gbps (7.6 Gbps UL and 7.6 Gbps DL) with channel bonding
- TDMA/TDD channel access and Network Synchronization
- 802.11ay technology with Terragraph certification



DESIGNED FOR HIGH-SPEED AND HIGH-DENSITY DEPLOYMENTS

Cambium Networks' 60 GHz cnWave solution provides easy, fast and cost-effective wireless gigabit connectivity for edge access and/or high-capacity backhaul for edge access solutions at a significantly lower TCO than fiber infrastructure. Service providers and enterprises now have access to gigabit for business and residential connectivity, backhaul for Wi-Fi access or LTE/5G small cell. Certified for Facebook Terragraph, cnWave mesh solutions are highly efficient at handling high-density deployments in cities and suburban areas.

V5000 is featured with two sectors covering up to 280 degrees with beamforming. A single V5000 can connect up to four other distribution nodes or up to 30 client nodes. V5000 can be used for PTP, PMP and mesh configurations.



CLOUD AND ON-PREMISES MANAGEMENT

60 GHz cnWave operates with Cambium Networks' cnMaestro management system. cnMaestro™ is a cloud-based or on-premises software platform for secure, end-to-end network control. cnMaestro wireless network manager simplifies device management by offering full network visibility and zero-touch provisioning. View and perform a full suite of wireless network management functions in real time. Optimize system availability, maximize throughput and meet emerging needs of business and residential customers.

60 GHz cnWave V5000 Distribution Node

Client Node Model		
	V1000	V3000
Maximum Throughput in DL or UL	1 Gbps	3.8 Gbps
Maximum EIRP	38 dBm	61 dBm

Specifications

Spectrum

Frequency Range	57 to 66 GHz in a single SKU
Channel Width	2.16 GHz, 4.32 GHz*
Carrier Bonding*	Up to 2 adjacent channels
Mode of Operation	PMP or Mesh, PTP

Interface

Channel Access	TDMA/TDD
Ethernet Interface	1 x 100/1000/10G BaseT with PoE In, 1 x 100/1000 BaseT with 802.3at PoE Out, 1 x SFP+

Ethernet

Protocol Supported	IPv4, IPv6
Network Management	cnMaestro, HTTP, HTTPS, SNMP v2c & v3
MTU	4,000 bytes
VLAN*	802.1ad (QinQ), 802.1Q with 802.1p priority
QoS*	4 Level QoS, DSCP and VLAN Tag

Security

Encryption	128-bit AES
Firmware Security	Signed Firmware Images

* Available in future release

Performance

Modulation & Coding Schemes	MCS-0 (BPSK) to MCS-12 (16-QAM)
Latency	< 1 ms
Maximum EIRP	38 dBm

Antenna

Gain	22.5 dBi
Type	Integrated
Beamforming Scan Range	+/- 140° azimuth, +/- 20° elevation
Beam Width	12°

Powering

Type	Passive PoE (42-57 V)
Power Consumption	60 W with AUX PoE Out in use, 35 W without AUX PoE Out in use

Physical

Environmental	IP66/67
Temperature	-40°C to 60°C (-40°F to 140°F)
Mean Time Between Failure	> 40 years
Weight	< 4 kg (8.8 lbs)
Dimensions W x H x D	280 mm x 185 mm x 102 mm (11.0 in x 7.3 in x 4.0 in)
Wind Survival	200 km/h (124 mi/h)

60 GHz cnWave V5000 Distribution Node



Ordering Information

C600500A004A 60 GHz cnWave V5000 Distribution Node

C000000L136A Universal Wall Mount Bracket

C000000L137A Universal Pole Mount Bracket for 1 inch to 3 inch diameter poles

NOTE: Power Supply Unit must be ordered separately.

ABOUT CAMBIUM NETWORKS

Cambium Networks empowers millions of people with wireless connectivity worldwide. Its wireless portfolio is used by commercial and government network operators as well as broadband service providers to connect people, places and things. With a single network architecture spanning fixed wireless and Wi-Fi, Cambium Networks enables operators to achieve maximum performance with minimal spectrum. End-to-end cloud management transforms networks into dynamic environments that evolve to meet changing needs with minimal physical human intervention. Cambium Networks empowers a growing ecosystem of partners who design and deliver gigabit wireless solutions that just work.